

FOR SALE

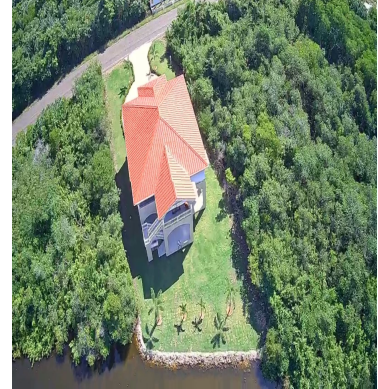
\$ 849,000.00 USD

Belize - Stann Creek District

Placencia

Listing ID: 100021303280

When its right, its right. This home was built by a well known quality builder in Placencia. The 35 foot pilings supports this masterpiece directly on the lagoon. Down stairs the entire ground floor has at least 16 foot to the floor level of the house above so besides the car parking there is enough room to build in another complete house. A 22 KVA generator sits at 12 foot off the ground in case of emergency, switches on and off automatically in the event of a drop in power supply. A beautiful landscaped garden supports the concrete drive way and "Gone with the wind" stair case to the living area. Seawall expertly constructed on the lagoon, so no erosion. By the way, there is an elevator too which takes one from the ground to the entrance hall upstairs and what a beautiful upstairs it is. 3 large bedrooms, 2 with double vanity en suites, walk in showers and clothes closets. Airconditioning abounds throughout the house. The craftsmanship of the carpenter is evident through out the home from wainscoting, architraves, bathroom cabinets, to kitchen, to outdoor entertainment areas. All solid woods, all carefully crafted. T



[SEE PROPERTY ON GOOGLE MAPS](#)



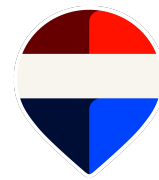
THERESA PRINSLOO

Sales Agent

501 6297332

theresa@1stchoicebelize.com

<https://1stchoicebelize.com/>



RE/MAX 1ST CHOICE

Main Street Placencia Village Stann Creek, Belize

Each office is independently owned and operated