

# FOR SALE

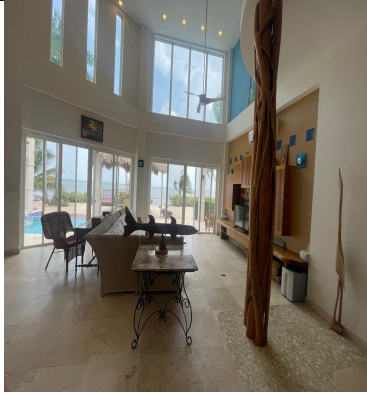
\$ 1,525,000.00 USD

Belize - Stann Creek District

Placencia

Listing ID: 100021303350

Idle Hour — A Landmark Beachfront Estate on Placencia Peninsula Welcome to Idle Hour, an extraordinary luxury beachfront residence located along the prestigious Million Dollar Drive on the stunning Placencia Peninsula. Set on a generous 0.25-acre (764.2 sq. meter) parcel with 76 feet of direct Caribbean Sea frontage, this remarkable estate combines architectural artistry, handcrafted finishes, and elevated tropical living in one of Belize's most sought-after coastal destinations. Spanning approximately 3,000 sq. ft., this fully furnished 3-bedroom, 3-bathroom masterpiece was designed to maximize light, airflow, and breathtaking sea views while offering exceptional privacy and luxurious indoor-outdoor living. From the moment you enter the royal palm-lined driveway, Idle Hour makes a statement. Leading up from the marble front stairs to Solid carved Mahogany double doors to towering ceilings, dramatic architectural details, and bespoke Belizean craftsmanship. All intentionally designed to create an atmosphere that is both grand and welcoming. The home's striking double-height living area is crowned by two Colum



[SEE PROPERTY ON GOOGLE MAPS](#)



**THERESA PRINSLOO**  
Sales Agent  
501 6297332  
[theresa@1stchoicebelize.com](mailto:theresa@1stchoicebelize.com)  
<https://1stchoicebelize.com/>



**RE/MAX 1ST CHOICE**

Main Street Placencia Village Stann Creek, Belize

Each office is independently owned and operated